



L P U S H P L A Y P R A M A

# PRAMA

## P U S H P L A Y

ALL ANGLES COVERED  
JUST PUSH PLAY!

The PRAMA Experience enables you to see our fully integrated system in action, where our entire portfolio of sound, lights, floors and walls come to life to motivate and guide you through a completely unique training session.

Inspired by today's fitness trends, PRAMA is built on 5 key pillars:

- **Immersive environments:** compelling, without intimidating!
- **System controlled:** preset exercises & programmes; coordinated timings - lights - music.
- **Group interactions:** group intensity and shared experience.
- **Gamification:** engages the mind & body just like a game.
- **Fun:** intrinsic motivation comes from engaging what you're doing.



ALL YOU NEED TO DO IS *PUSH Play* FOR THE WORKOUT YOU WANT!

Scan to discover more



## FLOORING



TECHNICAL FLOORING  
+  
FUNCTIONAL MARKINGS

PAVIGYM, with +50 years of experience as a premium flooring manufacturer and as pioneers in training concepts for fitness.

## INTERACTIVE UNITS



PRAMA Interactive Units are at the core of PRAMA's system. Using integrated LED light markings on pressure sensitive floors & walls, these new training elements will keep your members sweating and smiling at the same time!

# TRAINING SOFTWARE

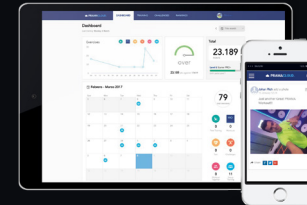
## PRAMA SOFTWARE

Touch-screen software enabling users and trainers to design workouts or group sessions.



## PRAMA CLOUD

The PRAMA CLOUD helps users, personal trainers, and gyms to store and synchronize all performance data.



## PRAMA KIOSK

Touch-screen KIOSKS are the link between the interactive units and PRAMA's comprehensive training modes and programmes!

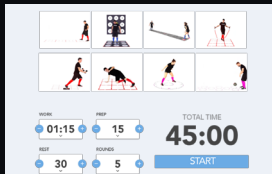


## AMBIANCE

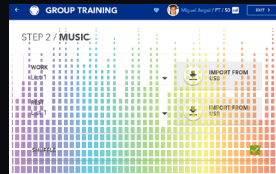
### MOOD LIGHTING



### MULTIMEDIA



### MUSIC



## KNOW HOW

- PRAMA ROADMAP TRAINING
- PRAMA MARKETING SUPPORT
- INSTALLATION SERVICE
- PRAMA INSTRUCTOR TRAINING
- DESIGN SERVICE

*Our team will always have your back, helping you step by step with your investment!*



Our mission is to provide the best combination of performance flooring, interactive technology, inspiring designs, and ready-to-use programming, so that whomever the end user may be [bodytype, age and level], the experience is wholly engaging and feels intuitive.



@pavigym // [facebook.com/pavigym](https://facebook.com/pavigym) // [info@pavigym.com](mailto:info@pavigym.com)

[WWW.PAVIGYM.COM](http://WWW.PAVIGYM.COM)